

St. Christopher's Hospital for Children

Behavioral Health Navigators

The CUC and The Center for Children & Youth with Special Health Care Needs have behavioral health resources for patients and their families. Our team of Behavioral Health Navigators (BHN's) can help patients connect to Community Behavioral Health (CBH) and other resources.

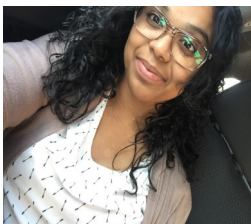
How It Works:

- Ask your child's provider for assistance getting connected to behavioral or mental health services.
 - A BHN will meet with you during your child's appointment OR will follow up with a phone call.
 - Then, the BHN will do an intake to connect your child or family member directly to CBH and facilitate referrals for other social needs from using a social determinates of health screen.
 - Next, CBH will connect your child or family member with appropriate services. **Please keep in mind that there may be wait time for services.**
 - Once your child or family member is connected to services, the BHN will continue to follow offer your family case management services as needed.
-

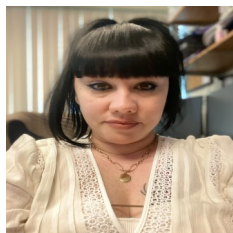
When Should I Request BHN Services?

- Your child or family member has unmet behavioral or mental health needs outside of Early Intervention/Elwyn
 - Your child or family member is receiving services but they are not satisfied with current care.
 - Your child or family member was referred to CBH but has not received any updates or follow-up.
 - Your child or family member needing services has a Philadelphia MCO health plan or Medical Assistance (Health Partners, Keystone First, AmeriHealth Caritas, Aetna Better Health, UnitedHealthcare Community Plan, etc.)
-

Behavioral Health Navigators



Iris Cruz



Ivette Pratts



Shanae Dudley



Jordi Olan